

▲TEAR HERE
ONLY OPEN USE IN 10 DAYS

2/1.25 LB
100% TURKEY BREAST



Member's Mark

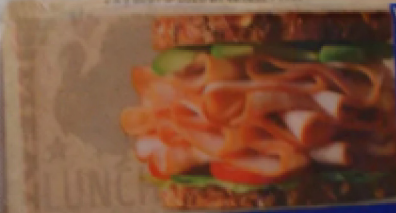
Extra Lean SMOKED TURKEY BREAST

MADE WITH
100%
TURKEY
BREAST

NET WT 4.00 LB
2.00 LB x 2

▲TEAR HERE
ONLY OPEN USE IN 10 DAYS

2/1.25 LB
100% TURKEY BREAST



Nutrition Facts

Serving Size 4 oz

Amount Per Serving

Calories 75

Total Fat 1g

Total Protein 15g

Total Carbohydrate 0g

Total Sodium 100mg

Total Fat 1g

Total Protein 15g

Total Carbohydrate 0g

Total Sodium 100mg

Total Fat 1g

Total Protein 15g

Total Carbohydrate 0g

Total Sodium 100mg

Total Fat 1g

Total Protein 15g

Total Carbohydrate 0g

Total Sodium 100mg

Total Fat 1g

Total Protein 15g

Total Carbohydrate 0g

Total Sodium 100mg

Total Fat 1g

Total Protein 15g

Total Carbohydrate 0g

Total Sodium 100mg

Total Fat 1g

Total Protein 15g

Total Carbohydrate 0g

Total Sodium 100mg

Total Fat 1g

Total Protein 15g

Total Carbohydrate 0g

Total Sodium 100mg

Total Fat 1g

Total Protein 15g

Total Carbohydrate 0g

Total Sodium 100mg





Good food. Responsibly.®

Product Name: Smoked Turkey Breast Code No.: 7874221892

Manufacturer: Smithfield Case/Pack/Count/Portion/Size: 40 oz

I. Meat/Meat Alternate

Please fill out the chart below to determine the creditable amount of Meat/Meat Alternate

Description of Creditable Ingredients per Food Buying Guide (FBG)	Ounces per Raw Portion of Creditable Ingredient	Multiply	FBG Yield/ Servings Per Unit	Creditable Amount *
Turkey	1.391902 oz	X	0.70	0.97433 oz
		X		
		X		
A. Total Creditable M/MA Amount¹				0.97433 oz

*Creditable Amount - Multiply ounces per raw portion of creditable ingredient by the FBG Yield Information.

II. Alternate Protein Product (APP)

If the product contains APP, please fill out the chart below to determine the creditable amount of APP. If APP is used, you must provide documentation as described in Attachment A for each APP used.

Description of APP, manufacture's name, and code number	Ounces Dry APP Per Portion	Multiply	% of Protein As-Is*	Divide by 18**	Creditable Amount APP***
NA		X		÷ by 18	NA
		X		÷ by 18	
		X		÷ by 18	
B. Total Creditable APP Amount¹					NA
C. TOTAL CREDITABLE AMOUNT (A + B rounded down to nearest 1/4 oz)					0.75 oz

*Percent of Protein As-Is is provided on the attached APP documentation.

**18 is the percent of protein when fully hydrated.

***Creditable amount of APP equals ounces of Dry APP multiplied by the percent of protein as-is divided by 18.

¹Total Creditable Amount must be rounded **down** to the nearest 0.25oz (1.49 would round down to 1.25 oz meat equivalent). Do **not** round up. If you are crediting M/MA and APP, you do not need to round down in box A (Total Creditable M/MA Amount) until after you have added the Total Creditable APP Amount from box B to box C.

Total weight (per portion) of product as purchased 2 Slices (2 oz)

0.75 oz

Total creditable amount of product (per portion) _____

(Reminder: Total creditable amount cannot count for more than the total weight of product.)

I certify that the above information is true and correct and that a 2.00 ounce serving of the above product (ready for serving) contains 0.75 ounces of equivalent meat/meat alternate when prepared according to directions.

I further certify that any APP used in the product conforms to the Food and Nutrition Service Regulations (7 CFR Parts 210, 220, 225, 226, Appendix A) as demonstrated by the attached supplier documentation.

APPROVED
By sceplina at 8:53 am, May 06, 2021
Signature
Sandy Ceplina
Printed Name

Labeling compliance
Title
05-06-2021 816-243-2891
Date Phone Number